

# WATER SLIDES

POINTMAN OY/2019



Picture: Helsinki swimming stadium

---

**Address**  
Niinistökatu 14  
05800 HYVINKÄÄ  
FINLAND

**Internet**  
[pointman@pointman.fi](mailto:pointman@pointman.fi)  
[www.pointman.fi](http://www.pointman.fi)

**Telephone**  
+358 (0)9 2754011



Picture: Vuosaari public swimming pool

**Blue Water is a water slide model developed by Pointman Oy. Its geometry allows us to customize the product better according to customer requirements.**

The water slides are made of fiberglass reinforced plastic. The standard width of the slide is 1,1 meters. The cured elements can be implemented with a radius of either 1,8 meters or 2,4 meters. Both variants come with a high edge (1100 mm) as standard, which improves the safety of the slide.

It is possible to integrate special parts, such as various brake parts or tunnels.

The versatility of collection allows the installation of water slide both indoors and outdoors. The color of the slide is also adjustable. We use colors from the RAL Classic color chart.



Picture: Pori public swimming pool





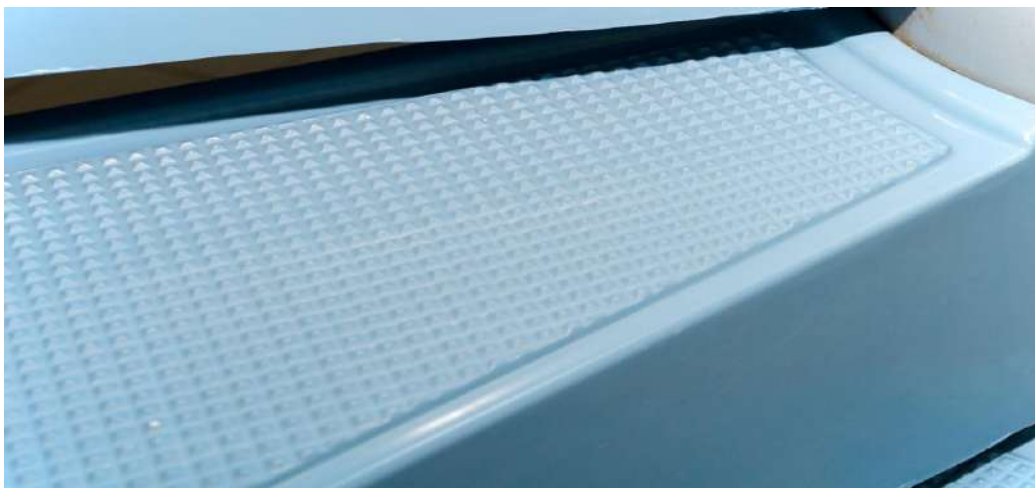
Picture: Water slide that runs both indoors and outdoors, Hotel Kuntoranta, Varkaus

**We also provide the accessories you need for the package, such as:**

- Stairways
- Treads
- Starting platform with handrails
- Covered tunnel sections
- Lighting solutions
- Traffic lights
- Timing devices

The stairs and steps we design are very safe. The steps are designed so that water accumulating on the surface drains along the drainage channel. This reduces the risk of slipping. In addition, an effective non-slip surface is used as the coating for the step.

The sliding roof is a roof element corresponding to the sliding materials. The cover may be partially translucent, allowing the surrounding light to enter. The roof can also be equipped with lighting effects.



Picture: Step with non-slip surface and drainage channel



Picture: Water slide installation, Keuruu public swimming pool

The water slide and its structures are supported by the central pillars of the curves and the pillars below the trough. The steel support structures are hot dip galvanized epoxy painted steel. The color of the supporting structures can be selected according to the RAL Classic color chart.

The following elements can be selected for the water slide:

Item	Length
Output element	1,8 meters
Straight element	1,5-3 meters
Curve element R 1,8m / 90 degrees	2,8 meters
Curve element R 2,4m / 90 degrees	3,7 meters
Curve element, custom, R1,8 / 2,4m, 10-80 degrees (5 degree increments)	2,8/3,7 meters
Jumping element (in the middle of a water slide)	1,5 meters
Levelling element (before the end- if necessary)	1,5 meters
Braking pool	3-5,5 meters (Length requirement depending on geometry)