

POINTMAN OY

Niinistökatu 14
Hyvinkää, Finland
+358 (0)9 2754011

www.pointman.fi
pointman@pointman.fi

WATER SLIDES

Special water slide model developed by Pointman Ltd.

Geometry gives more freedom and alternatives to the realisation.

Slide elements material:
Gelcoat/fibreglass.

Curve radius options:
-1,8m and 2,4m.

Our manufacturing method also allows the special parts for example:

- Integration of a braking element,
- Tunnel and similar parts.

All of the curve elements has a special high side(1,1m) which improves safety.

We also manufacture the necessary equipments for the water slide, such as:

- Staircases
- Steps
- Start platform with railings.

For example,our design of the steps are safe to use:

- Water which accumulates to the surface flows away and the **slipping risk decreases.**

Outdoor water slides in Helsinki Swimming stadium, Helsinki, Finland.



Indoor water slide in Porvoo indoor swimming center, Porvoo, Finland.



Outdoor water slide in luxury cruiser, ship buildt in Kvaerner Masa-Yards, Finland



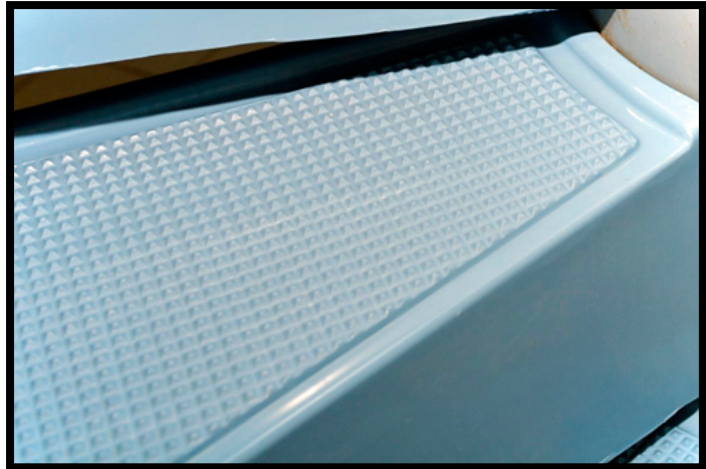
POINTMAN OY

Niinistökatu 14
Hyvinkää, Finland
+358 (0)9 2754011

www.pointman.fi
pointman@pointman.fi

Example of the steps, with the slip preventing surface and the flowing gutters of water.

Indoor water slide, Keuruu indoor swimming center, Keuruu Finland.



Example of the water slide going partly indoors and outdoors.

Partly indoor and outdoor water slide, in hotel kuntoranta, Varkaus Varkaus, Finland.

